

Compact and capable laser rangefinder



Hildur is a compact and capable laser rangefinder.

It is especially designed to fill the capability gap between long-range laser rangefinders such as the Vidar family and medium range fiber and diode laser rangefinders.

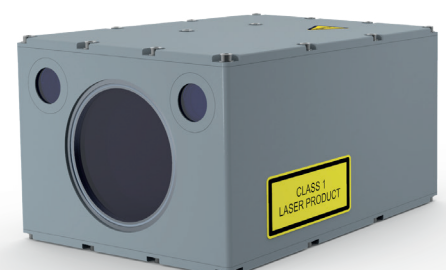
The laser rangefinder has a unique performance with an instrumented range of up to 40 km and a pulse repetition of up to 6 Hz and with full single shot performance. It is ideal to be used against fast targets such as UAV's at short to medium range. Due to its compact size it is also suitable for smaller applications

such as UAVs, remote weapon stations and for sight integration. It can be used for ground vehicles, naval ships, mortar, artillery and airborne applications.

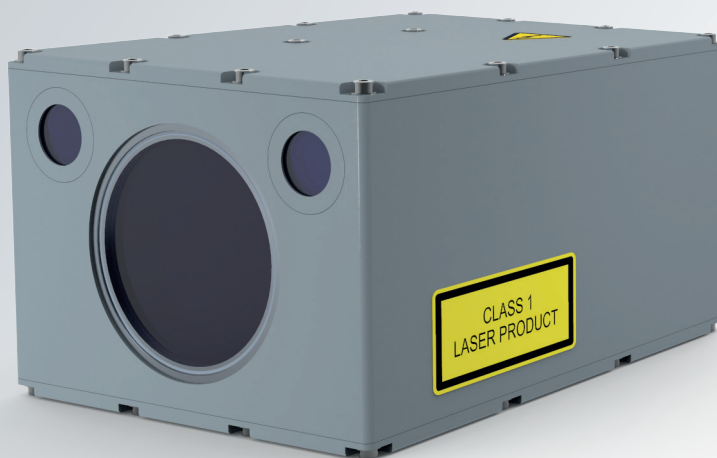
Hildur has an all solid-state laser transmitter with no moving parts, no fans and no cooling liquid bringing the required maintenance to a minimum.

The laser rangefinder is designed with state-of-the-art diode pumped Erbium: glass technology. The device is very compact and easy to integrate.

Hildur is classified as a fully eye-safe Class 1 laser product in accordance with IEC:2014.



HILDUR, COMPACT AND CAPABLE LRF



- Use against fast targets and UAV's
- Small and compact, ideal for sight integration
- Class 1 eye safety
- PRF up to 6 Hz
- Easy to align with a built in alignment camera
- Diode pumped Erbium: glass
- Environmentally sealed
- ITAR free

Technical data and specifications		Quality
Laser wave length	1535 nm	The Hildur laser rangefinder will be qualified against:
Instrumented range	Configurable up to 40 km	
Repetition rate	Maximum 6 Hz	• MIL-STD-461
Extinction ratio	43.7 dB *1	• MIL-STD-810
Laser divergence	0.8 mrad (factory adjustable)	• MIL-STD-1275
Laser class	1	• IP 65
Power supply	20-33 VDC	The laser rangefinder will be verified for harsh environmental applications. An all solid-state diode-pumped Erbium: glass transmitter ensures a long lifetime and low maintenance cost.
Power consumption	< 25W average at maximum repetition rate, 0.3 W stand-by	
Communication	RS422	MTBF >20 000 hours or >10 million laser shots.
Range accuracy	4 m absolute	
Range resolution	1 m	
Weight	< 1.5 kg	
Size (l x w x h)	140 X 120 X 80 mm	

*1 Extended target at 500 m, atmospheric transmission 100%, a Lambertian target with 85% reflectivity.

Technical data and product configuration might be subject to changes.

Lumibird has been a leading manufacturer of military lasers since the early 1960s, with naval, land and airborne applications worldwide. Over the years, Lumibird has delivered more than 5000 long range laser rangefinders for military applications to more than 30 countries.



LUMIBIRD
MORE THAN LASERS

Lumibird Photonics Sweden AB

Solhusgatan 13 · 412 76 Gothenburg · SWEDEN
info-lps@lumibird.com · www.lumibird.com